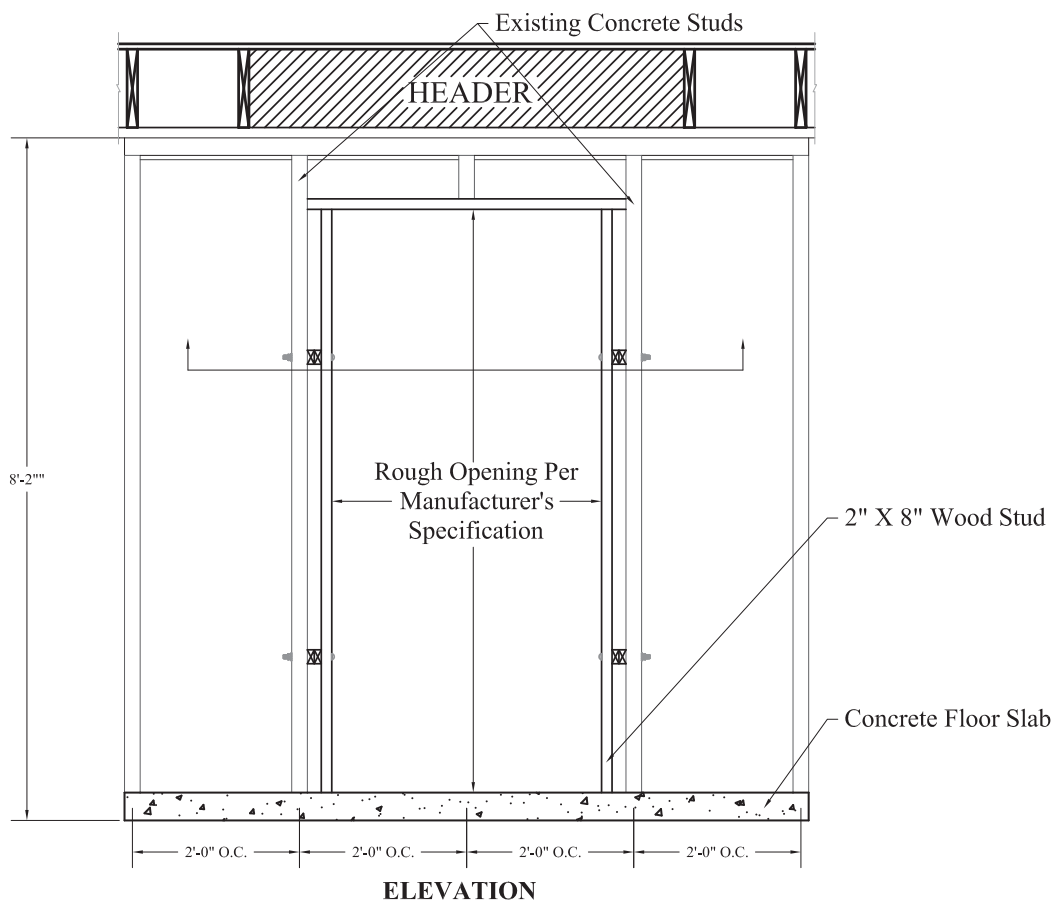
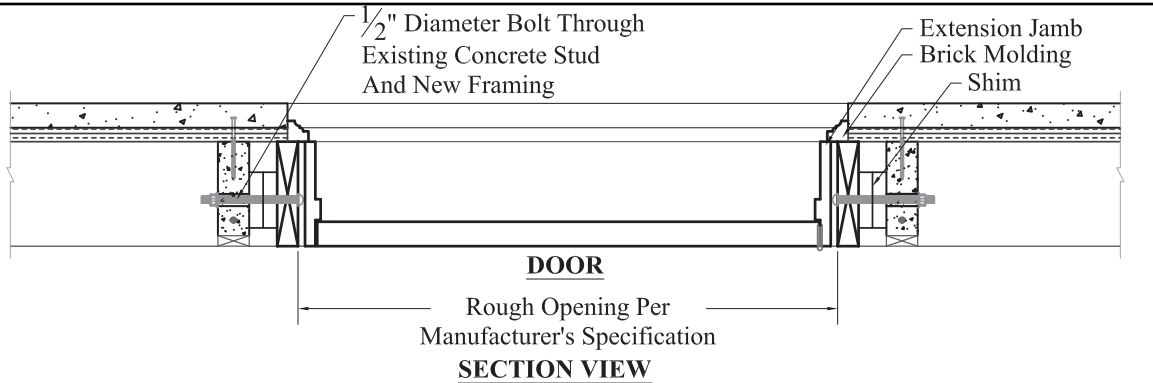


ADDING A DOOR TO AN R-5 WALL

Carefully follow the instructions and cautions listed below when adding a door to an R-5 Superior Walls® foundation.



CUTTING A DOOR OPENING INTO AN R-5 WALL

Locate the opening so that only one stud will be cut, and where the band board and sill plate run continuously over the opening. If there is a splice, a properly sized header must be placed above the opening, preferably installed in the floor system above the Superior Wall to stretch across the existing full length concrete studs.** The header can be placed directly above the door opening but must bear on wooden jack studs. Cut wooden framing at a 4 deg angle to fit tightly against top and bottom beam and bolt to existing concrete studs through the precast holes. One inch boards can be used to shim between the jamb and the concrete studs. Install the new door according to the manufacturer's specifications.

****Never cut in a door or window opening under a beam pocket or point loaded area.**

****Each job should be individually reviewed by a person competent in applying the structural design principals involved. In many jurisdictions this will require a registered design professional.**